

# Chit Chat

News for Home and Living

NOV/DECEMBER 2007

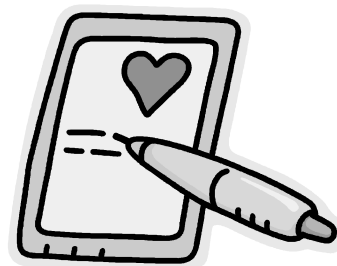
## What's On Your Shopping List?

If you're looking for great gift ideas...

**THE GIFT OF AFFECTION:** Be generous with appropriate hugs, kisses, pats on the back and handholds. Let these small actions demonstrate the love you have for family and friends.

**THE GIFT OF LISTENING:** But, you must *really* listen. No interrupting, no daydreaming, no planning your response. Just listen.

**THE GIFT OF A WRITTEN NOTE:** It can be a simple "Thanks for the help" note or a full sonnet. A brief, handwritten note may be remembered for a lifetime, and may even change a life.



**THE GIFT OF A FAVOR:** Every day, go out of your way to do something kind.

**THE GIFT OF A COMPLIMENT:** A simple and sincere "You look great in green", "You did a super job" or "That was a wonderful meal" can make someone's day.

### Inside Chit Chat

**Holiday Candle Safety Tips**

**How To Make Mom's Holiday**

**The Pet Page (Holiday Pet Safety)**

**Martha Stewart's Holiday To-Do List**

**Christmas Puzzles and Crafts**

**Fun Facts About the City of Riverside**

**THE GIFT OF LAUGHTER:** Clip cartoons. Share articles and funny stories. Your gift will say, "I love to laugh with you."

**THE GIFT OF SOLITUDE:** There are times when we want nothing more than to be left alone. Be sensitive to those times and give the gift of quietness to others.

**THE GIFT OF A CHEERFUL DISPOSITION:** The easiest way to feel good is to extend a kind word to someone. It's not that hard to smile and say "Hello" or "Thank You".

*This holiday season, may you give and receive these gifts and more!*

— Tara and April

## Holiday Candle Safety Tips

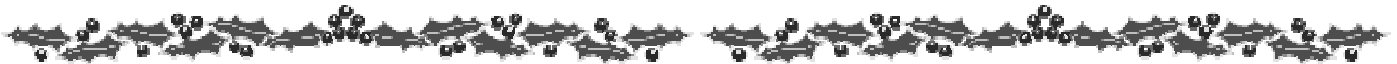
If you're fond of candles and plan on burning them during this holiday season, you should consider the risks that candles pose, and take precautions. While candles can be beautiful and smell wonderful, remember that a candle is an open flame, and it can ignite anything combustible nearby, according to information on the National Fire Protection Association website. Here are some *candle fire facts*:

- Christmas Day is when most home candle fires occur. New Year's Day and Christmas Eve tie for second.
- In 2004, an estimated 17,200 home fires started by candles were reported to fire departments. These fires resulted in an estimated 200 deaths, 1,540 injuries and estimated property losses of \$200 million.
- Falling asleep was a factor in 12% of home candle fires.
- Eighteen percent of home fires started after candles were left unattended.



The National Fire Protection Association recommends the following *candle safety tips*:

- Make sure all candles are extinguished before going to sleep or leaving the room.
- Use sturdy candle holders that won't tip over easily and that are made from a material that won't burn.
- Keep candle wicks trimmed to one-quarter inch, and extinguish taper and pillar candles when they get to within two inches of the holder.
- During power outages use flashlights, not candles.



## How To Make Mom's (Holi)Day

If you're wondering what to give Mom this holiday season, how about ... a day off? According to a salary.com survey, stay-at-home moms work an average of 92 hours a week. Moms who work full-time outside the home put in 40 hours on the job, and another 40 hours, plus nine hours of overtime, at home.



And the dollar value placed on all those hours? For stay-at-home moms, an annual salary of \$138,095. For moms who work full-time outside the home, the "at-home" dollar value is \$85,939.

If you can't write Mom a check for one of those amounts, consider creating a certificate that entitles her to a day free of housework, grocery shopping, meal preparation, laundry and other chores. And/or buy her a gift certificate to a spa for a full day of rest and relaxation! Then, step up to the plate and .... **make it happen!**



# Happy Holidays from *"The Sister Team"*

Wishing each and every one of you  
a most joyous, peaceful and healthy  
holiday season!!

Warmest regards,

*Tara and April Glatzel*



## Welcome New Clients!

*Here are some new clients who became members of our "Real Estate Family" recently, whom we'd like to welcome, say thank you, and wish you all the best!*

**Dewey Adams**

**Cindy Tuzzolino**

**Bill Howard**

**Mike and Graciela Patterson**

**Ian McCollom and Elizabeth Bettencourt**

*We love giving recognition to our new friends and our wonderful existing clients who are kind enough to refer their friends and relatives to us.*

## Nov/Dec Quiz Question

**What is the name of the world's tallest bridge?**

*Everyone responding by calling or e-mailing us with the correct answer will be entered into a drawing for:*

**A \$30 gift certificate for a store of your choice!**

*Drawing to be held on 12/31/07*



## October Quiz Answer

**Question:** What is the population of the City of Riverside, California?

**Answer:** As of 2006, the City of Riverside had an estimated population of 305,255.

source: [http://en.wikipedia.org/wiki/Riverside,\\_California](http://en.wikipedia.org/wiki/Riverside,_California)

(Turn to page 7 to read more about Riverside)

### **Congratulations to Matthew Tutor**

Your name was selected at random from all of the correct quiz entries and you'll receive a \$30 gift certificate for a store of your choice!

**Absolutely NO ONE  
sells more homes in  
*The Wood Streets*  
neighborhood than  
"The Sister Team"!!**

we **LIVE** in the neighborhood,  
we **WORK** in the neighborhood,  
we **KNOW** the neighborhood,  
we **SELL** the neighborhood!!!

# The Pet Page



Tw'as the night before Christmas  
when all through the house,  
Not a creature was stirring, not even a mouse.  
The stockings were hung by the chimney with care  
In hopes that St. Nicholas soon would be there.

The children were nestled all snug in their beds  
With no thought of the dog filling their heads.  
And mamma in her kerchief, and I in my cap  
Knew he was cold, but didn't care about that.

When out on the lawn there arose such a clatter  
I sprang from the bed to see what was the matter.  
Away to the window I flew like a flash  
Figuring the dog was free of his chain & into the trash.

The moon on the breast of the new-fallen snow  
Gave the luster of mid-day to objects below.  
When, what to my wondering eyes should appear  
But Santa Claus — with his eyes full of tears.

He unchained the dog, once so lively and quick  
Last year's Christmas present, now painfully sick.  
More rapid than eagles he called the dog's name  
And the dog ran to him, despite all of his pain.

"Now Dasher! Now Dancer! Now Prancer and Vixen!  
On Comet! On Cupid! On Donner and Blitzen!  
To the top of the porch! To the top of the wall!  
Let's find this dog a home where he'll be loved by all!"

I knew in an instant, there would be no gifts this year  
For Santa Claus has made one thing quite clear.  
The gift of a dog is not just for the season  
We had gotten the pup for all the wrong reasons.

In our haste to think of the kids a gift  
There was one important thing that we had missed.  
A dog should be family, and cared for the same  
You don't give a gift, then put it on a chain.

And I heard him exclaim as he rode out of sight,  
"You weren't giving a gift! You were giving a Life!"

Last issue's article on feral cats was a huge success. "The Sister Team" successfully trapped, spayed/neutered and released a half dozen cats, with almost a dozen more waiting in line!

The Riverside County Animal Shelter was booked well over a month in advance, so we found a local veterinarian whose prices were comparable.

Our many thanks to the doctors and staff at Town and Country Veterinary Clinic, conveniently located at 1845 University Avenue (between Kansas and Chicago) in Riverside. Phone: (951) 682-1251



## Holiday Pet Safety

Be careful with holiday decorations. Common yuletide plants such as mistletoe, ivy, lilies and holly berries can be poisonous, possibly even fatal. Supervise all candles.

Crowds of people can frighten pets; make sure they have a "safe haven" where they can retreat.

Pets are not garbage disposals for holiday leftovers. A sudden change of diet can give your dog or cat stomach pain and diarrhea, especially true for older pets. While a little chicken or turkey won't

harm your pet, be careful of bones. Chocolate can be toxic and also be aware of exposed wiring. Spray "bitter apple" to deter chewing, and hide or tack down cords or plugs.



If you are thinking about adopting a companion animal, please consider the Riverside County Animal Shelter first. You will not only find a friend that will love you unconditionally, but you will be saving a life. If you already have a companion animal, please consider the Riverside Animal Shelter's low cost spay/neuter clinic (951-358-7373) or visit one of the Saturday low-cost vaccination clinics or visit the clinic Tue-Fri 9:00 a.m. to noon for walk-in vaccinations or \$15 microchip (collars/tags can come off).

If you've lost a pet, go to their website at [www.rcdas.org](http://www.rcdas.org) to view photos of found pets. OR, if you need help with the cost of a spay or neuter, please contact The Sister Team and we will donate money to this incredibly important cause! 🐾

# Martha Stewart's Holiday To-Do List

**December 1:** Blanch the Thanksgiving turkey carcass. Spray-paint gold, turn upside down and use as sleigh to hold Christmas cards.

**December 5:** Invite Mormon Tabernacle Choir over to record outgoing Christmas message for answering machine.

**December 8:** Align carpets to adjust for curvature of the earth.

**December 14:** Drain city reservoir; refill with mulled cider, orange slices and cinnamon.

**December 19:** Install plumbing in gingerbread house.

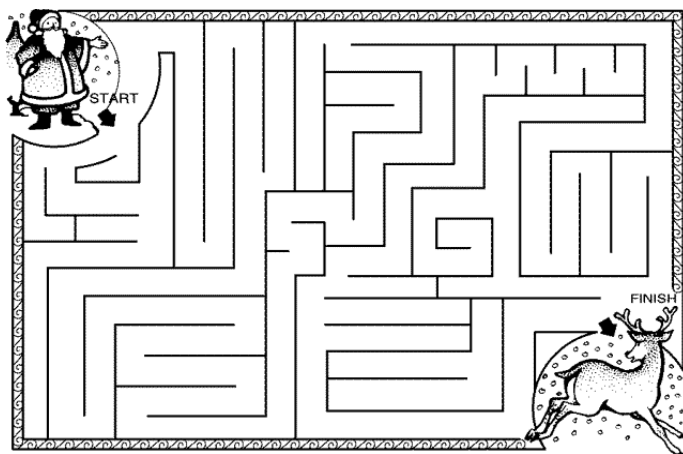
**December 22:** Adjust legs of chairs so each dinner guest will be same height when sitting at his or her assigned seat.

**December 24:** Do annual good deed. Go to several stores. Be seen engaged in last-minute shopping, thus making many people feel less inadequate than they really are.

**December 25:** Bear son. Swaddle. Lay in color-coordinated manger scene.



Help Santa find his reindeer!



## Make Your Own Snow Globe

1. Wash and dry a mason jar or a baby-food jar, and the lid. Glue holiday figures to the inside of the jar lid using a glue gun.
2. Fill the jar with cold water to within 1/3 inch of the top. Add a drop of food coloring if desired (blue makes a nice sky effect). Then add some glitter and/or confetti.
3. Squeeze a line of hot glue around the inside rim of the lid. Immediately seal the jar with the lid.



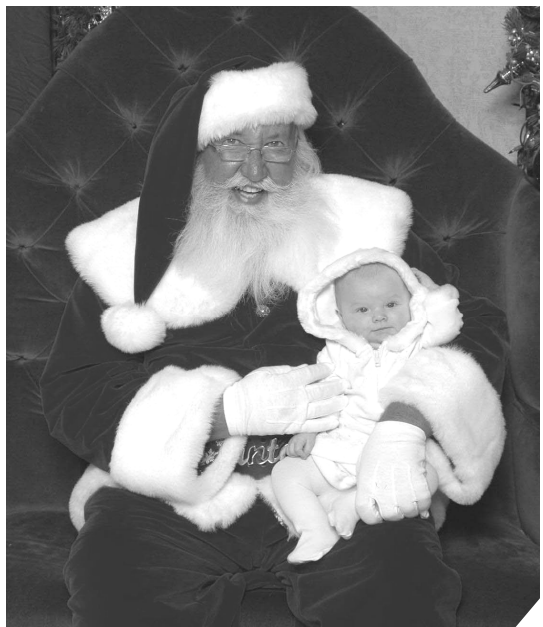
## Christmas Word Search Puzzle

|           |             |            |
|-----------|-------------|------------|
| CANDLE    | GIFT        | REINDEER   |
| CANDY     | GINGERBREAD | SANTA      |
| CARDS     | GLOVES      | SLED       |
| CHESTNUTS | JESUS       | SMILES     |
| CHILDREN  | LIGHTS      | SNOWBALL   |
| CHRISTMAS | MERRY       | SNOWFLAKES |
| COOKIES   | MITTENS     | SNOWMAN    |
| DECEMBER  | MOUSE       | STABLE     |
| FAMILY    | NATIVITY    | STAR       |
| FOOD      | ORNAMENT    | STOCKING   |
| FRIENDS   | PINETREE    | WINTER     |
| FRUITCAKE | PRESENTS    |            |

|   |   |   |   |   |   |   |   |   |   |   |   |   |   |   |
|---|---|---|---|---|---|---|---|---|---|---|---|---|---|---|
| D | A | E | R | B | R | E | G | N | I | G | W | G | D | F |
| S | A | M | T | S | I | R | H | C | S | M | I | L | E | S |
| N | N | A | C | Y | D | N | A | C | C | U | J | O | Y | T |
| O | A | O | V | G | S | E | P | H | R | S | V | N | A |   |
| W | T | S | W | I | G | D | E | C | E | M | B | E | R | R |
| B | I | N | R | F | Y | E | S | R | S | N | M | S | I | O |
| A | V | O | E | T | L | K | E | S | T | A | B | L | E | C |
| L | I | W | T | D | I | A | I | P | N | E | X | R | M | G |
| L | T | M | N | R | M | C | K | R | U | M | N | E | N | M |
| I | Y | A | I | O | A | T | O | E | T | E | R | I | G | O |
| G | C | N | W | C | F | I | O | S | S | R | K | N | P | U |
| H | S | A | N | T | A | U | C | E | Y | C | E | D | F | S |
| T | C | H | I | L | D | R | E | N | O | V | O | E | L | E |
| S | D | N | E | I | R | F | D | T | P | O | S | E | H | X |
| C | M | I | T | T | E | N | S | S | F | M | D | R | S | R |

Copyright 1997 Loraine Wauer Ferus

## Brooklynn's 1st Xmas



## City of Riverside, California

The City of Riverside is the county seat of Riverside County, is named for the nearby Santa Ana River, and is the birthplace of the California citrus industry. Riverside is the 61st largest city in the United States.

Riverside is nicknamed The City of Trees, and prides itself on its historic connection to the navel orange, which was introduced by Eliza Tibbetts in 1873. Riverside is home to the three surviving parent navel orange trees, from which all American west coast navel orange trees are descended.

This great city is also home to the famous National Historic Landmark hotel, the Mission Inn. Nearly 25,000 people gather annually the day after Thanksgiving to view the lighting ceremony of almost 3 million Christmas lights and over 400 animated figures. This "Festival of Lights" lasts throughout the holiday season.

## Brooklynn's First Halloween



**Say Cheese...  
... or Pumpkin!**

**If you are  
looking to  
purchase  
a home,  
sign up with us  
to see homes  
before  
they're listed  
in the  
MLS!**



*Happy  
Holidays!*



Tara and April Glatzel  
"The Sister Team"  
Your Real Estate Consultants For Life!  
390 N. McKinley St., Ste. 106  
Corona, CA 92879  
E-mail: [aprilglatzel@remax.net](mailto:aprilglatzel@remax.net)  
Website: [www.woodstreethomes.com](http://www.woodstreethomes.com)  
Tara: (951) 205-4428 April: (951) 205-4429

Place  
Stamp  
Here

**Chit Chat**

## *Referral Reward Program ...*

We want to thank those of you who have participated in our Client Referral program! Marketing for new clients costs us tons of time, money and energy. Like any company, we need new clients to stay in business. Over the years we've found that looking for new clients takes away from the time we would rather be spending focusing on your goals, explaining your options, and providing the excellent service you expect.....*and deserve!*

If you refer your friends and relatives to us, everyone benefits. We can serve you better. We send you a nice gift. And we assure you that we'll take the very best care of anyone you refer to us.

If you want any friends, coworkers, relatives or business acquaintances to receive a free subscription to this newsletter, please contact us and we'll put them on the mailing list immediately.

It is our desire to build a business based on strong and lasting relationships.

This newsletter is intended for entertainment purposes only. Credit is given to the authors of various articles that are reprinted when the original author is known. Any omission of credit to an author is purely unintentional and should not be construed as plagiarism or literary theft.

Copyright 2007 Tara and April Glatzel. This information is solely advisory, and should not be substituted for legal, financial or tax advice. Any and all financial decisions and actions must be done through the advice and counsel of a qualified attorney, financial advisor and/or CPA. We cannot be held responsible for actions you may take without proper financial, legal or tax advice.